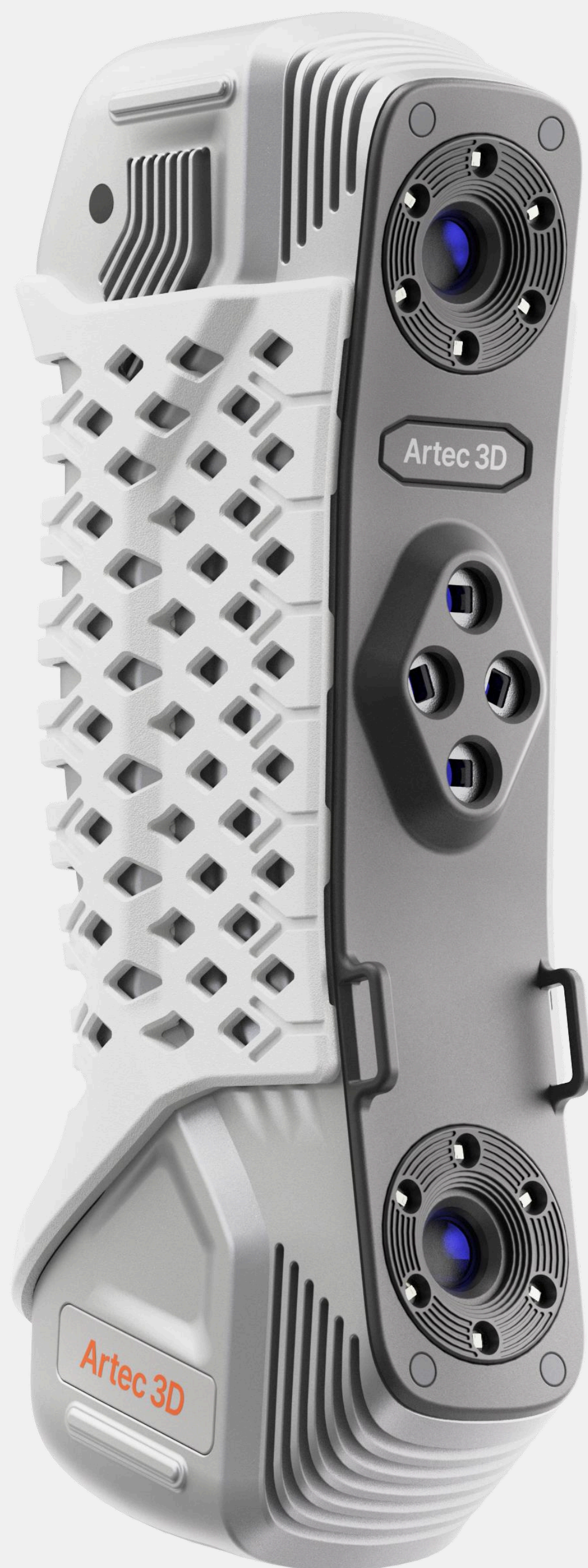


Artec Point

Quick Start Guide

Version 1.5



Welcome

Congratulations! You are now the proud owner of an Artec Point scanner, a compact, automated desktop 3D scanner for digitizing small parts with metrology-grade accuracy.

As you begin using your scanner, we would love to hear about your experiences with it. Whether you want to share a case study or demonstrate new ways in which you work, or if you need any guidance along the way, we are always ready to listen. Please feel free to get in touch with us at support@artec3d.com!

To access the user manual of Artec Point or other Artec manuals, scan this QR code or visit: <https://docs.artec3d.com/>.



While every effort has been made to ensure the accuracy and completeness of the information in this user manual, Artec 3D assumes no responsibility or liability for any errors, omissions, or inaccuracies. The contents are provided “as is” and is subject to change without prior notice.

Ensure that the product is used in accordance with the latest version of this document on the manufacturer’s website.

CAUTION

- Keep the scanner out of reach of children. Only trained or instructed adults may operate the device.
- Users must assess and accept all associated risks before operating the device. Improper use of the battery can lead to damage to the scanner, personal injury, loss of scanned items, harm to other equipment, or financial losses.

To ensure safe and effective operation and to minimize these risks, it's crucially important to carefully read and understand both this Quick Start Guide and the Advanced User Manual before beginning any work. Always follow all safety instructions and guidelines provided. If you have any questions or if any part of the user documentation is unclear, please do not hesitate to reach out to our support team for assistance.

General Safety Directions

Class 2M laser product	<ul style="list-style-type: none">Avoid direct or reflected laser exposure.Never aim the laser at people, especially their eyes.Be cautious of both specular and diffuse reflections. Use a baffle to cover any potential reflected light hazards.Do not use optical devices like magnifying glasses.Disassembling the scanner and access to the laser source are strictly prohibited. <hr/>
Risk of electric shock	<ul style="list-style-type: none">Working in hazardous areas or close to electrical installations or similar situations is a life risk.Make sure that the power supply does not come into contact with metallic/ conductive objects. <hr/>
Environment	<p>The limits of use for the scanner are restricted as follows:</p> <ul style="list-style-type: none">To be operated indoors only. Using the device outdoors is at your own risk and is not covered by the warranty.Ambient temperature: -10 °C–40 °CRelative humidity: up to 10-90% RHAvoid direct sunlight in the scanning areaClean and dust-free environment <hr/>
Unauthorized disassembling of the product	<ul style="list-style-type: none">Do not disassemble the product.Disassembling the device or attempting DIY (do-it-yourself) repair is strictly prohibited. Any changes or modifications not expressly approved by the party responsible for compliance (i.e. Manufacturer, or authorized repair shop) could void the user’s authority to operate the equipment. Only authorized Artec 3D Service Centers are entitled to repair this product.

Step #1

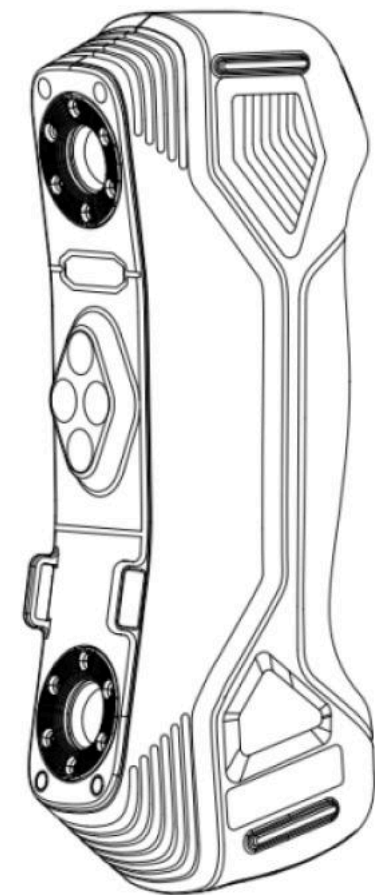
Unboxing / Scope of delivery

Please remove the scanner from the outer packaging and verify that the following standard configuration items are present in the container.

- Working in hazardous areas or close to electrical installations or similar situations is a life risk.
- Make sure that the power supply does not come into contact with metallic/conductive objects.

Scope of delivery:

- 1x Artec Point 3D scanner
- 1x Master plate (Calibration board)
- 1x Power adapter
- 1x USB cable
- 1x Power data cable
- 1x Carry case
- 1x C-Type to USB3.0
- 2x Set of Higher Reflective Targets - \varnothing 6 mm
2000 PCS
- 2x Set of Higher Reflective Targets - \varnothing 3 mm
500 PCS
- 1x Dongle
- 1x ISO certificate 17025
- 1x Transport packaging (Carton box,
styrofoam)

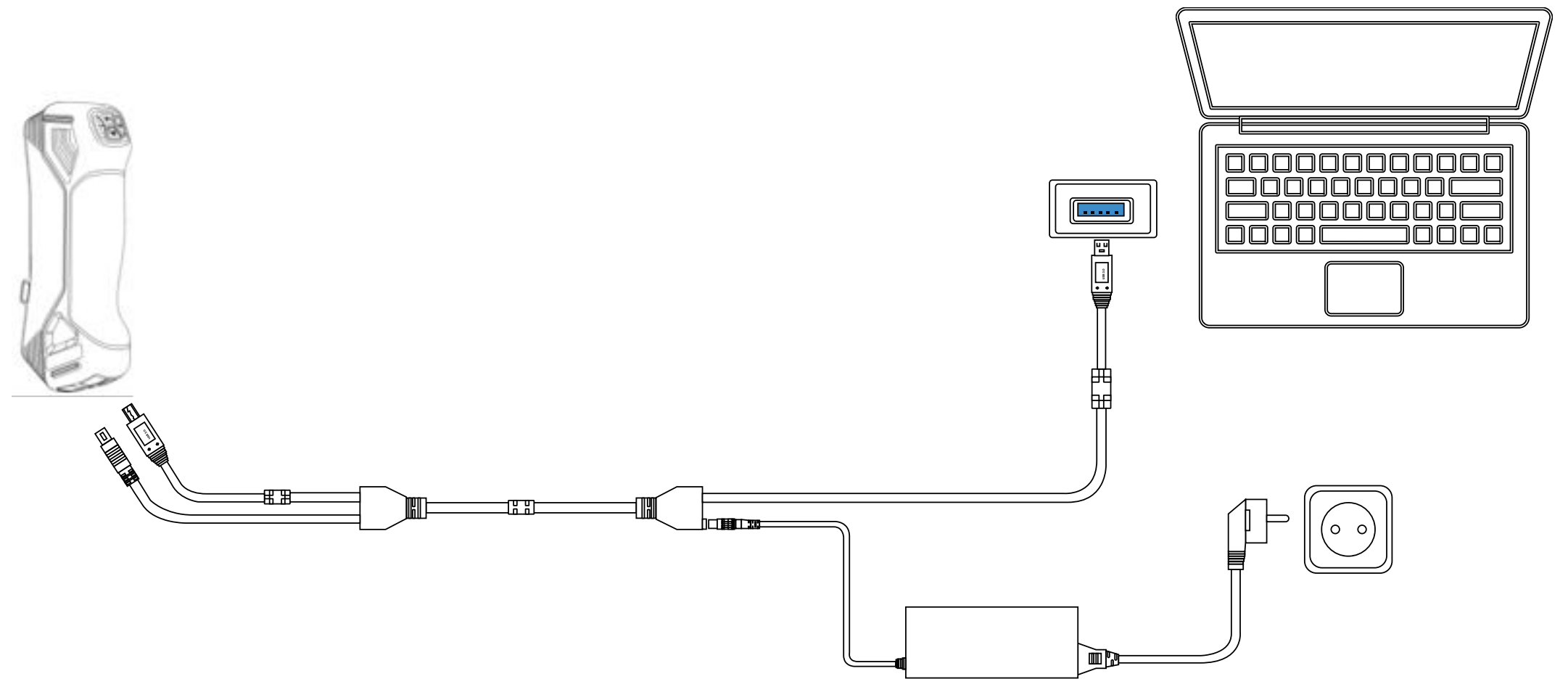


CAUTION

Please keep the scanner's packaging for any return (repair, exchange etc).
This will help prevent transportation damage.

Step #2

Example of Setup / Connection



⚠ CAUTION

- Please ensure that you installed the Artec Point Addon plugin from Artec Installation Center before connecting the scanner to your computer.

To connect Artec Point:

1. Insert the dongle into the computer's USB port.
2. Connect the USB Type A port of the cable to the USB 3.0 port on the computer.
3. Connect the power port and Type B port of the USB cable to their corresponding interfaces on the device (when connecting, ensure that the direction of the arrow at the cable interface matches to prevent damage).
4. Plug the power adapter into the DC port of the USB cable.
5. After confirming that the above steps are correctly done, finally plug the power adapter into the power socket.

⚠ CAUTION

- Please ensure that you have sufficient working area to scan objects and all cables are well organized. Cables should be organized in a way that prevents accidental snagging on other objects. Make sure the cables are long enough to scan the object. Excessive tension on the cables can lead to damage to connectors of the scanner, computer, power adapter, and in rare cases, to rupture and damage to the protective sheath of the cables.
- Please place the scanner on a safe and stable surface, where it will not be accidentally pushed away or damaged by other objects or people.
- Keep adequate distance between scanner and other objects, sources of heat, persons to maintain safety during the scanner work.
- Ensure that the scanner is properly secured in your hands while holding it. Place it on a table or another surface very carefully. Any damage to cables, connectors and scanner caused by improper use of the scanner and the organization of the workspace is not covered by the warranty. It is prohibited to use scanner if cables are damaged.

Step #3

Startup

Artec Point requires Artec Studio 18 (and later) software which allows it to scan and process scanned data and should be purchased separately. Note that an Internet connection must be available to download and license the software.

After the Artec Point Addon plugin has been installed, the scanner has been set up and connected to the PC correctly, you can start using the device.

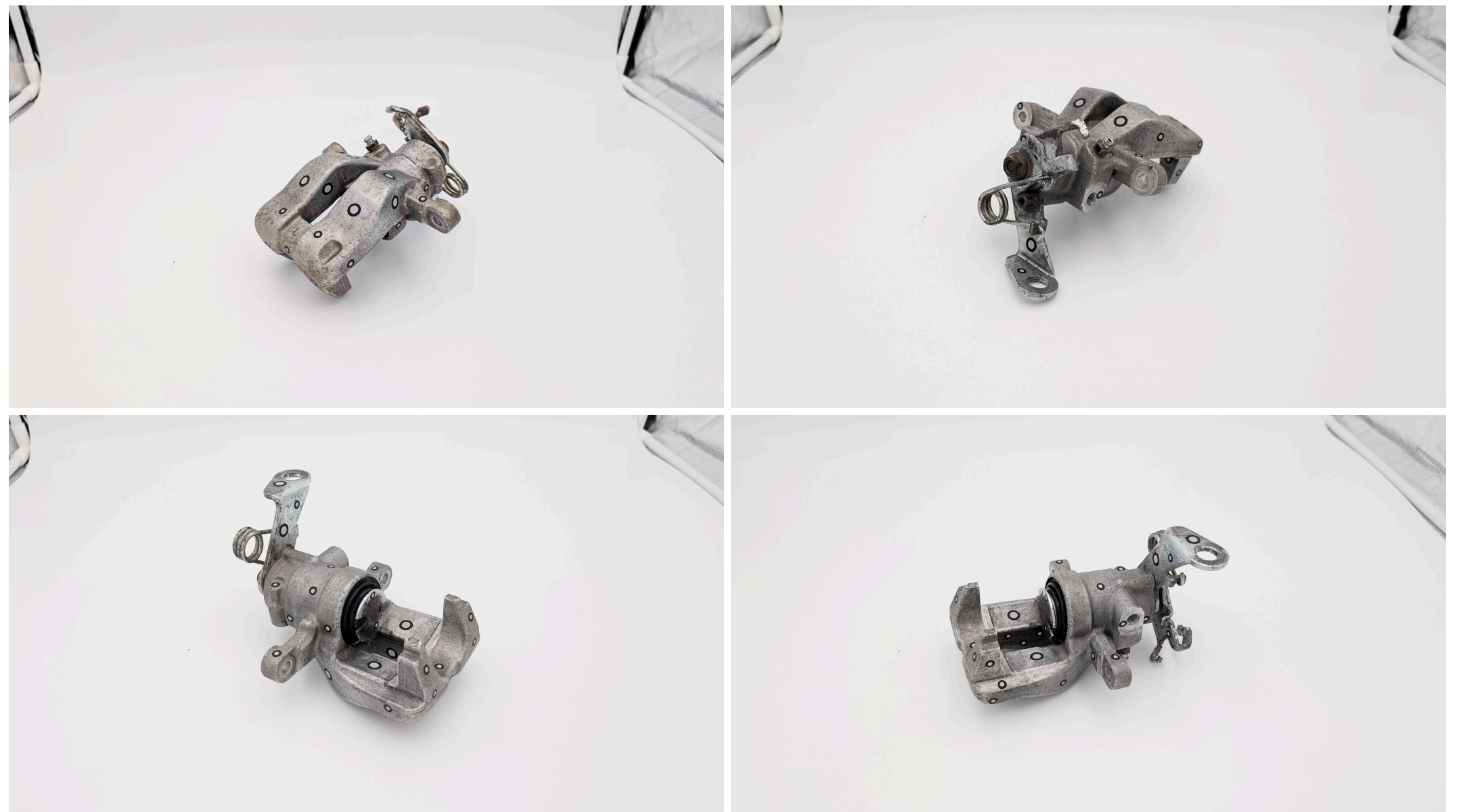
Before scanning:

1. Launch Artec Studio.
2. Open **Scan** panel.
3. Click the **Scan with Artec Point** button and wait for Artec Point to initialize.
4. Calibrate Artec Point

To gain the best results, we recommend calibrating Artec Point before each scanning session. Follow the calibration instructions in Artec Studio.

Prepare object:

1. Attach reflective targets to or near the work piece.



2. Adjust target size by expanding the **Advanced** section on the **Scan** panel in Artec Studio.

Scan targets:

For higher quality of the resulting point cloud, it is strongly advisable to scan the attached targets in **Targets** mode before scanning the object itself.

CAUTION

- It is mandatory to carefully read the User Manual prior to any use of a scanner.
- **Calibration Disclaimer**
Please note that factory calibration is performed under certain conditions, including specific temperature, humidity, calibration artifacts, and robotic-assisted procedures. Recalibration using a portable calibration board made by a user may not achieve the same results as factory calibration due to differing conditions and methods. Therefore, moderate differences in accuracy following recalibration are not indicative of a faulty or defective scanner but are instead a consequence of different calibration methods. If, after multiple calibrations, you still achieve unsatisfactory results, please contact the Artec 3D Support Team.

Step #4

Scanning



Scan control button on scanner to start/pause scanning

Finish scanning

Finish scanning button in Artec Studio to complete scanning

Scan targets:

For higher quality of the resulting point cloud, it is strongly advisable to scan the attached targets in **Targets** mode before scanning the object itself.

When scanning targets, position Artec Point near the work piece and ensure targets begin to appear one by one in the 3D scene.

Scan the target object:

Now you are all set up to start scanning the object.

1. Select the targets object that scanning will be based on.
2. Click the **Play** button to the right of the **Scan geometry** section to initiate scanning in **Geometry** mode.
3. Press the **Scan control** button on the scanner to turn on its laser.
4. Scan the object.
5. Press the **Scan control** button on the scanner again when scanning is complete.
6. Finally, click the **Finish scanning** button in Artec Studio. Artec Studio will automatically perform initial scans processing and optimization.

NOTICE

For further information regarding the settings of Artec Point scanning and post-processing scanned data, please refer to the Artec Studio manual.

FAQ

Handling / maintenance

Scanner does not start:

- If the scanner does not light up at startup, check the power supply and ensure the power adapter is connected to the scanner.
- Contact [Artec 3D Support Team](mailto:support@artec3d.com) (support@artec3d.com)

Scanner is not recognized on the PC:

- Check that scanner has a power supply and switched on.
- Check the data cable is not damaged or bent.
- Check that the USB port complies with the USB3.0 specification.
- Check that the driver status in the Device Manager is up-to-date.
- Restart the PC and the scanner.
- Contact [**Artec 3D Support Team**](mailto:support@artec3d.com) (support@artec3d.com).

Artec Support

Should you ever have technical questions about our product, please contact our technical support. They will be at your disposal with their expertise.

You can download a detailed instruction manual from our [Documentation portal](http://docs.artec-group.com) at <http://docs.artec-group.com>.

We would like to thank you again for choosing our product and wish you a lot of pleasure and productivity with it.

Regulatory Information



The European Union

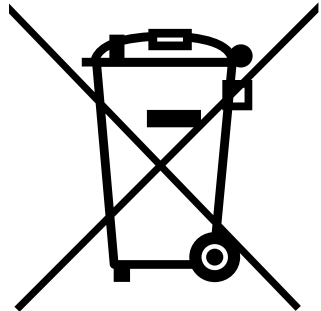
This product is in compliance with applicable EU regulations and **CE mark** is properly affixed to the scanner.

The applicable EU Directives are outlined in the CE declaration of conformity.

EMC Directive 2014/30/EU

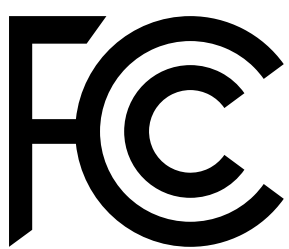
Low Voltage Directive 2014/35/EU

RoHS Directive 2011/65/EU



Disposal of Electrical and Electronic Equipment in Private Households

In the European Union, Norway, Iceland and Liechtenstein: This symbol on the product, in the manual, in the warranty, or on the packaging indicates that this product must not be treated as household waste. Instead, it should be taken to an appropriate collection point for the recycling of electrical and electronic equipment.



The U.S.

FCC Rules and Regulations

This equipment has been tested and found to comply with the limits for a **Class B digital device, pursuant to part 15 of the FCC Rules**. These limits are designed to provide reasonable protection against harmful interference in a residential installation. This equipment generates, uses, and can radiate radio frequency energy and, if not installed and used in accordance with the instructions, may cause harmful interference to radio communications. However, there is no guarantee that interference will not occur in a particular installation. If this equipment does cause harmful interference to radio or television reception, which can be determined by turning the equipment off and on, the user is encouraged to try to correct the interference by one or more of the following measures:

- Reorient or relocate the receiving antenna.
- Increase the separation between the equipment and receiver.
- Connect the equipment into an outlet on a circuit different from that to which the receiver is connected.
- Consult the dealer or an experienced radio/TV technician for help.

Other certifications and compliance information may be updated by Artec 3D from time to time. Please refer to [Artec 3D Support Team](mailto:support@artec3d.com) (support@artec3d.com) for more information.



The Regulatory Compliance Mark (RCM) shows that a product complies with the relevant requirements in Australia and New Zealand.

Manufacturer

ARTEC EUROPE S.à r.l., 4 Rue Lou Hemmer, L-1748 Senningerberg, Luxembourg

UK representative

ARTEC 3D (UK) LTD, 71-75 Shelton Street, Covent Garden, London, WC2H 9JQ, United Kingdom

